

Posted on September 14, 2016

By William Buhmaster, Mid-Continent Railway Museum

On September 7th the DULUTH sleeping car arrived at Mid-Continent Railway Museum.

The sleeping car was unloaded on September 8th and is now setting on a pair of 6-wheel trucks for the first time in 82 years.

Duluth South Shore & Atlantic sleeping car "DULUTH" is one of a series of five 10-section sleeping cars built by The Barney & Smith Car Company of Dayton, Ohio in 1902. The car is of all wood construction, with varnished mahogany interior, fine marquetry throughout, stained glass windows and green plush upholstery. In addition to the sleeping section the car features a stateroom, a smoking room as well as men and women lavatories. The car was used on the DSS&A's North Country Mail (between Duluth, MN and Sault Ste. Marie) and remained in active service until 1934. The car left the DSS&A in December 1934 when it was sold to a Michigan resident and hauled to the shores of Lake Superior where it has been used as a summer cottage for the past 81+ years. In December 2015 the owners, Bob and Beth Krasche, generously donated the DULUTH to Mid-Continent Railway Museum. Since then museum volunteers have been finalizing plans to load, move and acquire appropriate trucks for the car.



The crane in position for lifting the DULUTH



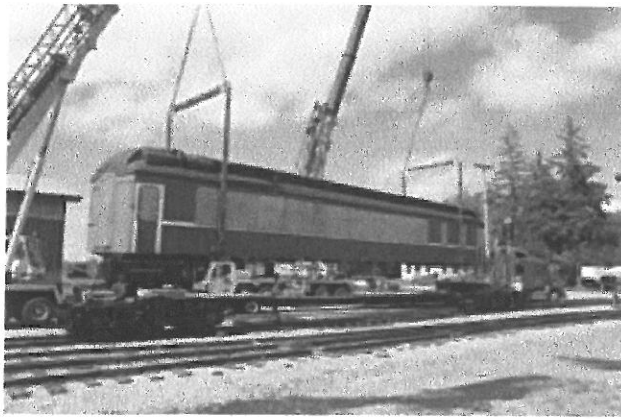
Just getting underway.... near Calumet, MI



Backing into position for unloading



Backing into position for unloading



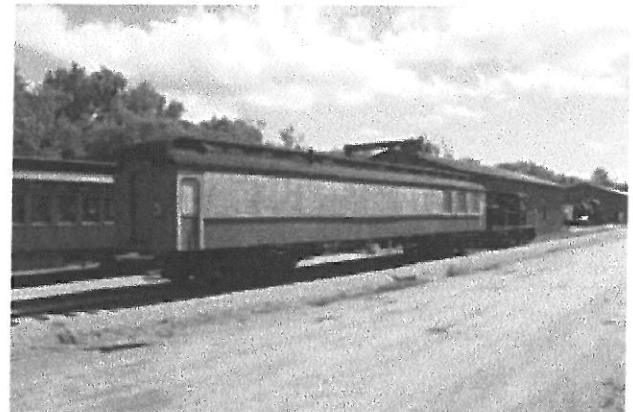
In the air



In the air



On the rails once again



Underway on a short journey to the other end of the yard.



The team helping unload at North Freedom.