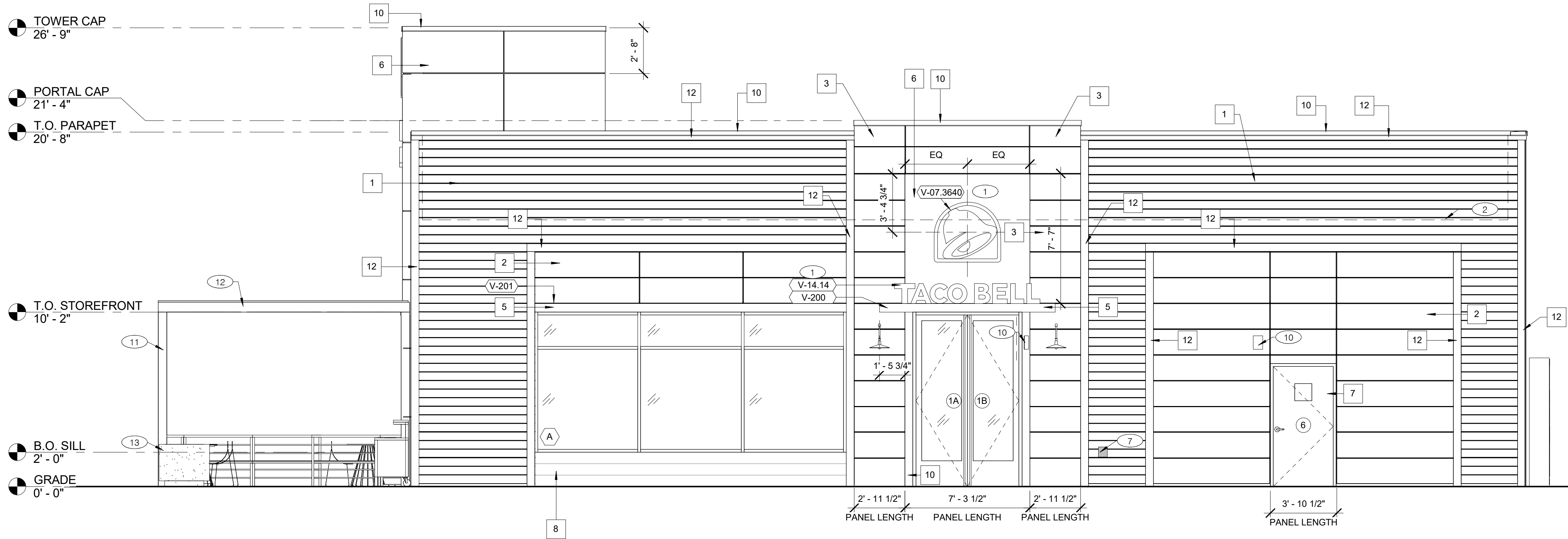


"This submittal is for permitting purposes only and is preliminary in nature. As such, any other use or reliance is strictly prohibited."



**SIDE ENTRY ELEVATION**

1/4" = 1'-0"

**A**

EXTERIOR FINISH SCHEDULE								
SYMBOL	AREA	AREA	MANUFACTURER	MATERIAL SPEC	COLOR	ALTERNATE FINISH INFORMATION		
						MFR.	MATERIAL SPEC.	COLOR
1	EXTERIOR FIBER CEMENT PANELS	1899 SF	JAMES HARDIE	ARTISAN V-GROOVE RUSTIC 144"L X 8.25" W; 7" EXPOSURE COMES PRIMED FOR PAINT	PAINT SW7045 INTELLECTUAL GRAY	NICHIHA	ROUGH SAWN	SMOKE
2	EXTERIOR FIBER CEMENT PANELS	689 SF	JAMES HARDIE	REVEAL PANEL SYSTEM	PAINT SW7048 URBANE BRONZE	NICHIHA	ILLUMINATION	PAINTED SW7048 URBANE BRONZE
3	EXTERIOR FIBER CEMENT PANELS	189 SF	JAMES HARDIE	REVEAL PANEL SYSTEM	PAINT SW7048 URBANE BRONZE	NICHIHA	ILLUMINATION	PAINTED SW7048 URBANE BRONZE
4	STOREFRONT	133 SF	OLD CASTLE	SERIES 500 - WIDE STILE FOR WINDOWS AND SERIES 500 - WIDE STILE FOR DOORS	DARK BRONZE	N/A	N/A	N/A
5	METAL CANOPIES	208 SF	BY OTHERS	-	DRYLAC POWDER COATING 038/60080 STATUARY BRONZE	N/A	N/A	N/A
6	TOWER AND PORTAL ACCENT	824 SF	JAMES HARDIE	REVEAL PANEL SYSTEM - SMOOTH	PAINTED SW6365 COPPER MOUNTAIN	N/A	N/A	N/A
7	EXTERIOR HOLLOW METAL DOOR	81 SF	-	-	PAINT SW7048 URBANE BRONZE	N/A	N/A	N/A
8	LOCAL RECLAIMED WOOD	166 SF	BY GC	BARNWOOD	AS-IS/ GRAY	N/A	N/A	N/A
9	DOWNSPOUT	103 SF	-	-	PAINT SW7045 INTELLECTUAL GRAY	N/A	N/A	N/A
10	EXTERIOR METAL TRIM - ENTRY	13 SF	AEP SPAN	TBD				

EXTERIOR FINISHES IN LF					
SYMBOL	AREA	LENGTH	MANUFACTURER	COLOR	ALTERNATE MANUFACTURER
10	EXTERIOR METAL TRIM - PORTAL CAP AND TOWER CAP	113' - 10 3/4" 56' - 7 1/4"	AEP SPAN	PAINTED SW 7048 URBANE BRONZE	
11	EXTERIOR FIBER CEMENT TRIM BOARDS	28' - 8 3/4"	JAMES HARDIE	PAINTED SW 7048 URBANE BRONZE	
12	EXTERIOR FIBER CEMENT TRIM BOARDS	13' - 8 1/2"	JAMES HARDIE	PAINTED SW 7048 URBANE BRONZE	

**EXTERIOR FINISH SCHEDULE**

NTS

**E**

**MISCELLANEOUS:**

A. SEE SHT A1.1 "WINDOW TYPES" FOR WINDOW ELEVATIONS.

**SEALERS (REFER TO SPECS):**

A. SEALANT AT ALL WALL AND ROOF PENETRATIONS.  
B. SEALANT AT ALL WINDOW AND DOOR FRAMES AT HEAD AND JAMB. DO NOT SEAL SILL @ WINDOWS.  
C. APPLY NEOPRENE GASKET (CONT.) BETWEEN BUILDING & CANOPY.

**"CRITICAL" DIMENSIONS:**

A. REQUIRED CLEAR OPENING WIDTH TO ENSURE COORDINATION WITH STANDARD SINAGE/ BUILDING ELEMENTS DIMENSIONS.

NOTE: NO EXTERIOR SIGNS ARE WITHIN THE SCOPE OF WORK COVERED BY THE BUILDING PERMIT APPLICATION. THE GENERAL CONTRACTOR SHALL BE RESPONSIBLE FOR COORDINATING THE INSTALLATION OF ALL EXTERIOR SIGNS AND INSTALLAION OF REQUIRED BLOCKING AND ELECTRICAL CONNECTIONS FOR FINAL APPROVED SIGNS.

**GENERAL NOTES**

N.T.S.

**D**

- BUILDING SIGN, BY SIGN VENDOR. REQUIRES ELECTRICAL. SEE ELECTRICAL PLANS
- DASHED LINE INDICATES ROOF LINE BEYOND.
- 4" DIA. BOLLARD AT ALL DOWNSPOUTS.
- GAS METER
- SWITCH GEAR. PAINT TO MATCH WALL.
- ELECTRIC METER
- HOSE BIB BOX AT 18" A.F.F. SEE DETAIL 6/A6.1
- WALL SHALL BE FINISHED PRIOR TO INSTALLATION OF SWITCHGEAR.
- SCUPPER, COLLECTOR, AND VERTICAL DOWNSPOUT 6" MIN
- EMERGENCY LIGHT FIXTURE
- CANOPY COLUMN BY SIGNAGE VENDOR. SIGNAGE VENDOR TO ENSURE THE USE OF NON RUSTING BOLTS
- PATIO CANOPY WITH INTEGRAL LIGHTING, BY SIGNAGE VENDOR
- DECORATIVE PLANTER.

Type Mark	QTY	ITEM DESCRIPTION
V06.3640	2	LARGE SWINGING BELL WHITE LOGO -3'-6" x 4'-0"
V-07.3640	1	LARGE SWINGING BELL FLAT CUT OUT WALL MOUNTED -3'-6" x 4'-0"
V-09.14	1	MEDIUM TB 14" CHANNEL LETTERS WHITE (2) STACKED (1) LINEAR
V-14.14	1	MEDIUM TB 14" LETTER - FLAT CUT OUT - LINEAR
V-101.DT	1	DT AWNING - 9'0" X 4'0"
V-200	1	ENTRANCE PORTAL CANOPY
V-201	1	DINING WINDOW AWNING - 18' 2" X 1' 4"

**SIGNAGE SCHEDULE**

NTS

**B**

CONTRACT DATE: 11.13.18  
BUILDING GROUP: T40M-Q  
FLOOR PLAN: ME - T40  
REVISION DATE:  
SITE NUMBER: 313327/449274  
STORE NUMBER: 2018088.55

**TACO BELL**

200 PARIS DRIVE  
FRANKLIN, IN 29730



T40

**EXTERIOR ELEVATION**

**A4.0**

PLOT DATE: 12/6/2018 12:23:56 PM

**ELEVATION KEYNOTES**

N.T.S.

**C**