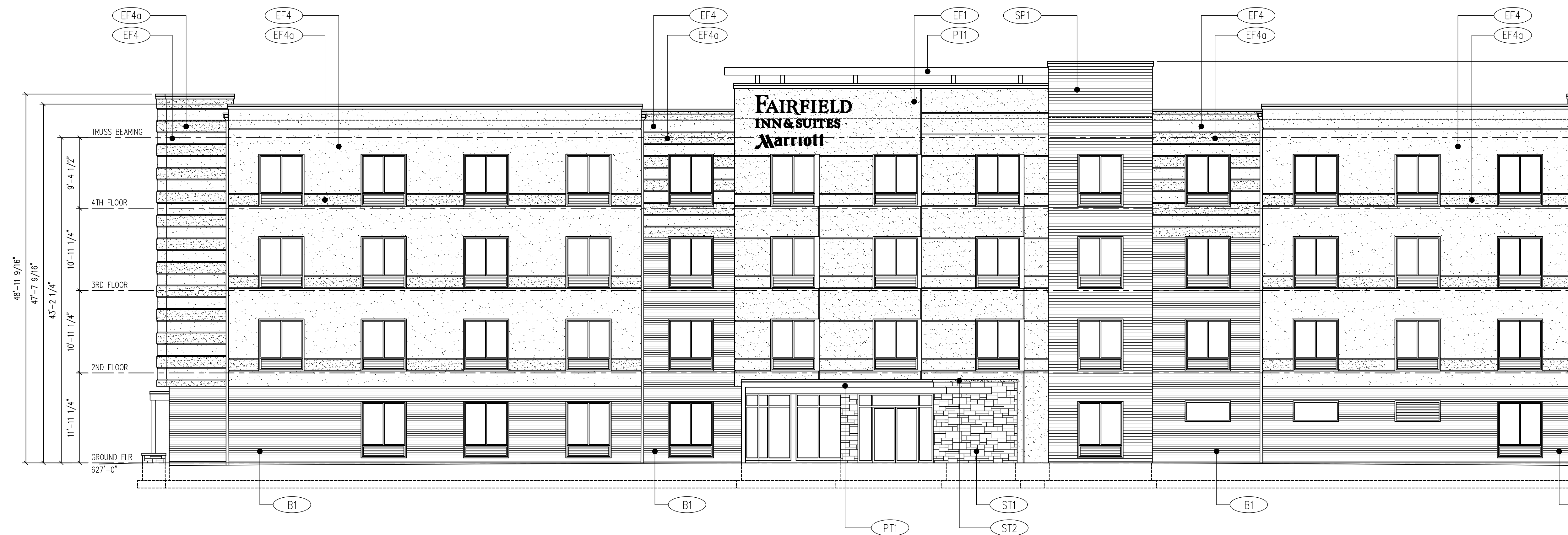
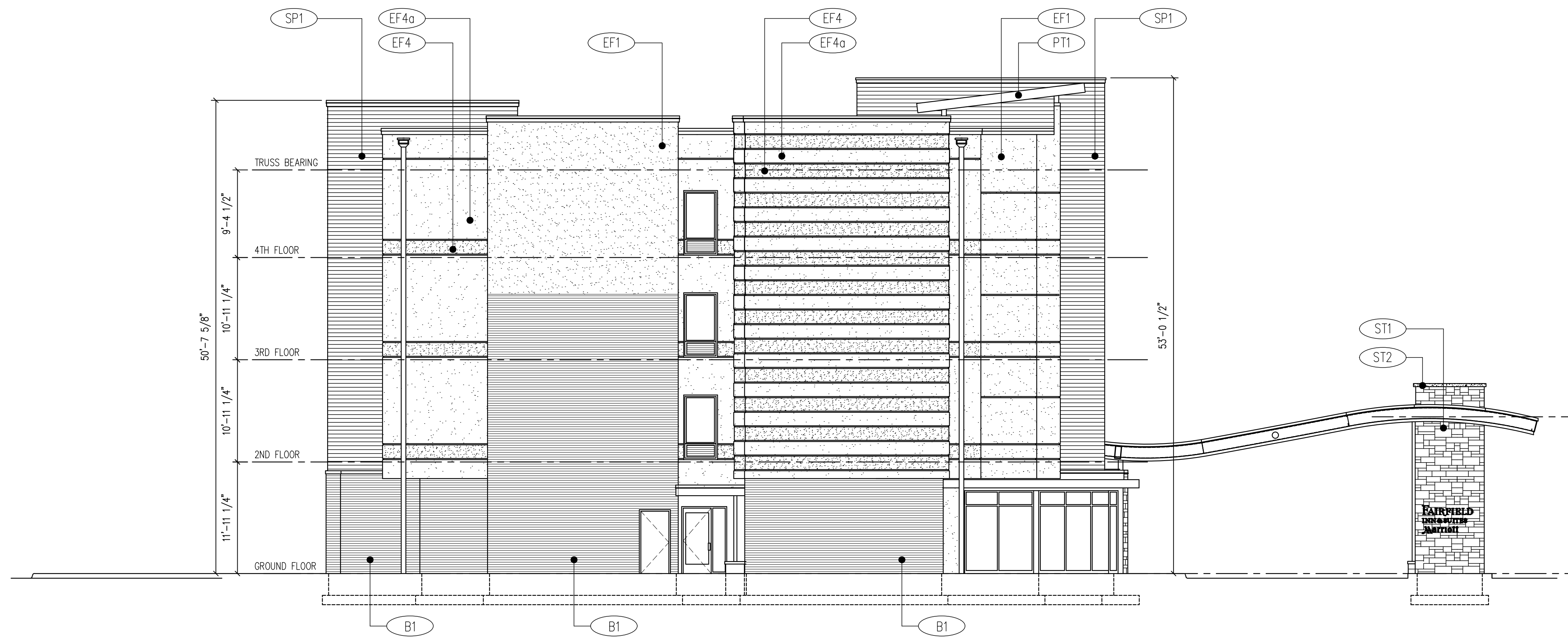


2 EAST (SIDE) ELEVATION
SCALE: 1/8" = 1'-0"



1 SOUTH (FRONT) ELEVATION
SCALE: 1/8" = 1'-0"

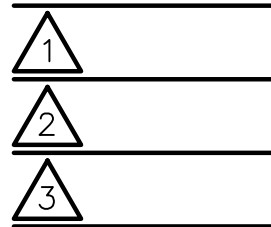


② WEST (SIDE) ELEVATION
SCALE: 1/8" = 1'-0"



① NORTH (REAR) ELEVATION
SCALE: 1/8" = 1'-0"

Revisions



95 Culebra Road
Taos, New Mexico 87571
Phone/Fax: (575) 751-9526

FLOOR AREAS

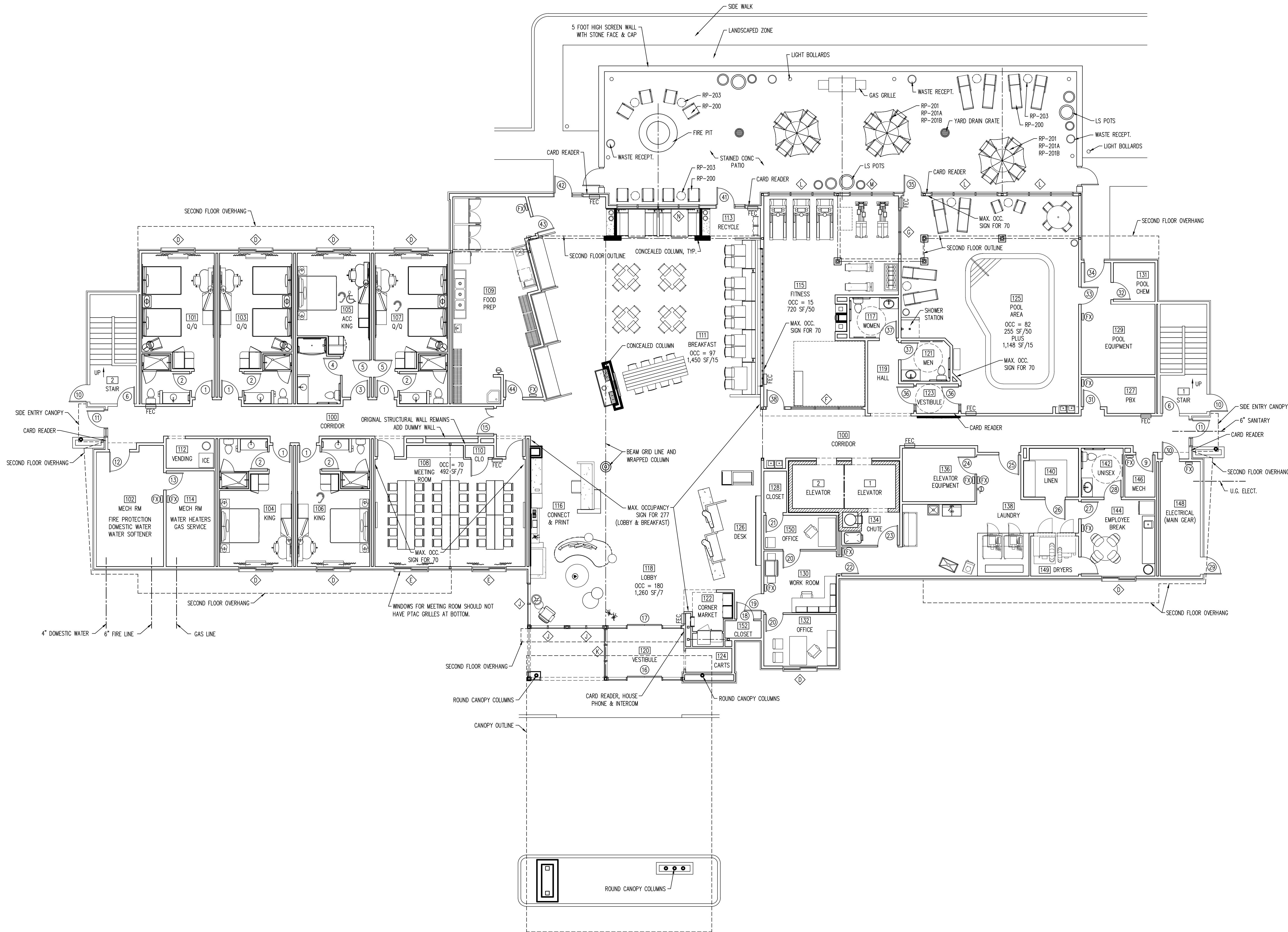
FIRST FLOOR	12,660 SF
SECOND FLOOR	12,420 SF
THIRD FLOOR	12,420 SF
FOURTH FLOOR	12,420 SF
TOTAL FLOOR AREA	49,920 SF

DRAWING KEY

- INDICATES HEARING IMPAIRED ROOM
- INDICATES ACCESSIBLE ROOM
- WINDOW TYPE, SEE SHEET A5.1
- DOOR TYPE, SEE SHEET A5.1
- WALL TYPE, SEE SHEET A6.1

ADA REQUIREMENTS

- WHEEL CHAIR ACCESSIBLE ROOMS
PLUS EQUIPPED FOR HEARING IMPAIRED
ROOM 105 ACC. KING ROOM (ROLL-IN SHOWER)
- WHEEL CHAIR ACCESSIBLE ROOMS
ROOM 217 ACC. KING SUITE
ROOM 317 ACC. KING SUITE
ROOM 413 ACC. DOUBLE QUEEN
ROOM 417 ACC. KING SUITE
- ROOMS EQUIPPED FOR HEARING IMPAIRED
ROOM 106 KING ROOM
ROOM 107 DOUBLE QUEEN ROOM
ROOM 206 DOUBLE QUEEN ROOM
ROOM 221 KING SUITE
ROOM 305 KING SUITE
ROOM 322 DOUBLE QUEEN ROOM
ROOM 410 KING ROOM
ROOM 425 KING SUITE



1 FIRST FLOOR PLAN
SCALE: 1/8" = 1'-0"

FAIRFIELD INN & SUITES
350 PARIS DRIVE
FRANKLIN, IN 46131

FIRST FLOOR
FF&E PLAN

DATE: SEPTEMBER 8, 2017

AC1.1

Revisions

1	
2	
3	

95 Culebra Road
Taos, New Mexico 87571
Phone/Fax: (575) 751-9526

FLOOR AREAS

FIRST FLOOR	12,660 SF
SECOND FLOOR	12,420 SF
THIRD FLOOR	12,420 SF
FOURTH FLOOR	12,420 SF
TOTAL FLOOR AREA	49,920 SF

DRAWING KEY

- INDICATES HEARING IMPAIRED ROOM
- INDICATES ACCESSIBLE ROOM
- WINDOW TYPE, SEE SHEET A5.1
- DOOR TYPE, SEE SHEET A5.1
- WALL TYPE, SEE SHEET A6.1

ADA REQUIREMENTS

- WHEEL CHAIR ACCESSIBLE ROOMS
PLUS EQUIPPED FOR HEARING IMPAIRED
ROOM 105 ACC. KING ROOM (ROLL-IN SHOWER)
- WHEEL CHAIR ACCESSIBLE ROOMS
ROOM 217 ACC. KING SUITE
ROOM 317 ACC. KING SUITE
ROOM 413 ACC. DOUBLE QUEEN
ROOM 417 ACC. KING SUITE
- ROOMS EQUIPPED FOR HEARING IMPAIRED
ROOM 106 KING ROOM
ROOM 107 DOUBLE QUEEN ROOM
ROOM 206 DOUBLE QUEEN ROOM
ROOM 221 KING SUITE
ROOM 305 KING SUITE
ROOM 322 DOUBLE QUEEN ROOM
ROOM 410 KING ROOM
ROOM 425 KING SUITE



1 SECOND FLOOR PLAN
SCALE: 1/8" = 1'-0"

FAIRFIELD INN & SUITES
350 PARIS DRIVE
FRANKLIN, IN 46131

SECOND FLOOR
FF&E PLAN

DATE: SEPTEMBER 8, 2017

AC1.2

Revisions

1	
2	
3	

95 Culebra Road
Taos, New Mexico 87571
Phone/Fax: (575) 751-9526

FLOOR AREAS

FIRST FLOOR	12,660 SF
SECOND FLOOR	12,420 SF
THIRD FLOOR	12,420 SF
FOURTH FLOOR	12,420 SF
TOTAL FLOOR AREA	49,920 SF

DRAWING KEY

	INDICATES HEARING IMPAIRED ROOM
	INDICATES ACCESSIBLE ROOM
	WINDOW TYPE, SEE SHEET A5.1
	DOOR TYPE, SEE SHEET A5.1
	WALL TYPE, SEE SHEET A6.1

ADA REQUIREMENTS

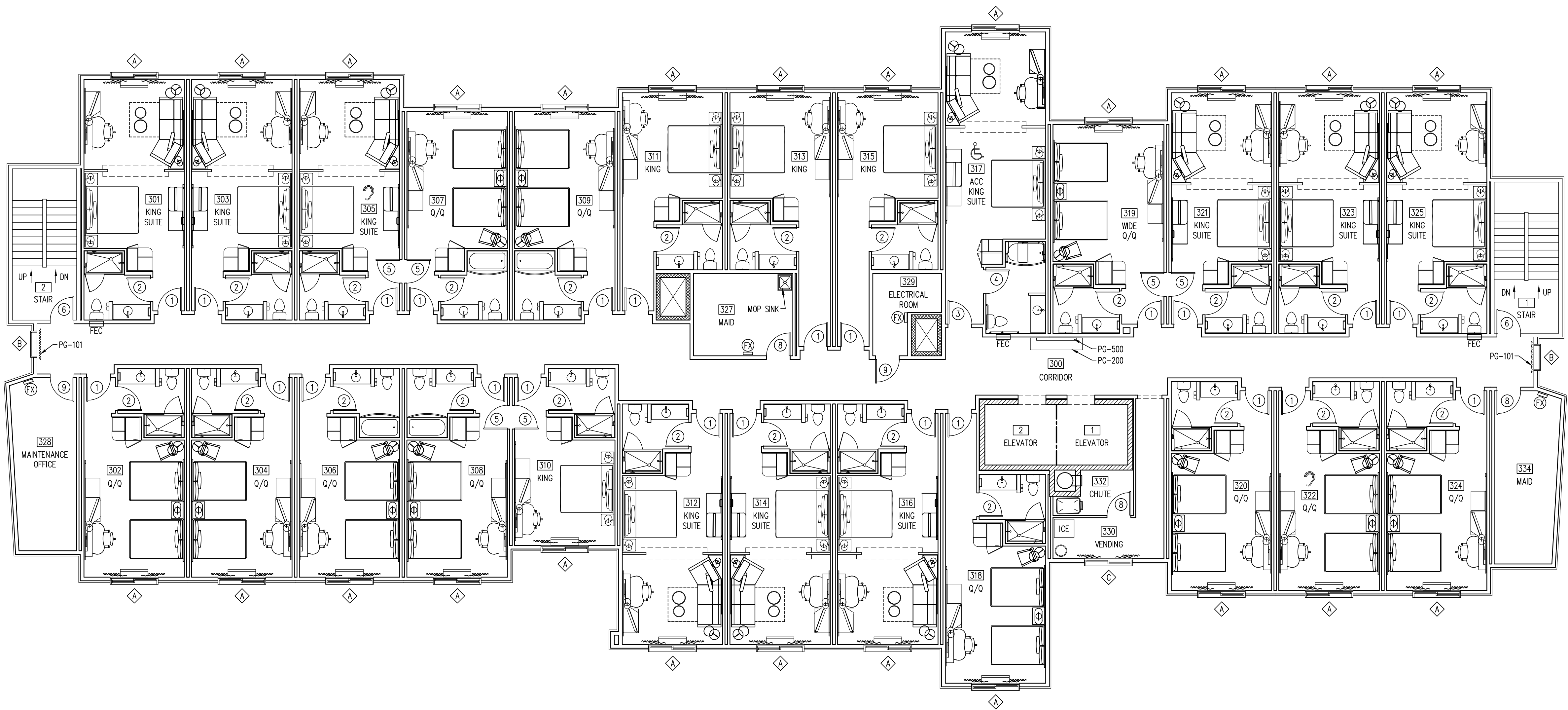
WHEEL CHAIR ACCESSIBLE ROOMS
PLUS EQUIPPED FOR HEARING IMPAIRED
ROOM 105 ACC. KING ROOM (ROLL-IN SHOWER)

WHEEL CHAIR ACCESSIBLE ROOMS

ROOM 217 ACC. KING SUITE
ROOM 317 ACC. KING SUITE
ROOM 413 ACC. DOUBLE QUEEN
ROOM 417 ACC. KING SUITE

ROOMS EQUIPPED FOR HEARING IMPAIRED

ROOM 106 KING ROOM
ROOM 107 DOUBLE QUEEN ROOM
ROOM 206 DOUBLE QUEEN ROOM
ROOM 221 KING SUITE
ROOM 305 KING SUITE
ROOM 322 DOUBLE QUEEN ROOM
ROOM 410 KING ROOM
ROOM 425 KING SUITE



Revisions

1	
2	
3	

95 Culebra Road
Taos, New Mexico 87571
Phone/Fax: (575) 751-9526

FLOOR AREAS

FIRST FLOOR	12,660 SF
SECOND FLOOR	12,420 SF
THIRD FLOOR	12,420 SF
FOURTH FLOOR	12,420 SF
TOTAL FLOOR AREA	49,920 SF

DRAWING KEY

	INDICATES HEARING IMPAIRED ROOM
	INDICATES ACCESSIBLE ROOM
	WINDOW TYPE, SEE SHEET A5.1
	DOOR TYPE, SEE SHEET A5.1
	WALL TYPE, SEE SHEET A6.1

ADA REQUIREMENTS

WHEEL CHAIR ACCESSIBLE ROOMS
PLUS EQUIPPED FOR HEARING IMPAIRED
ROOM 105 ACC. KING ROOM (ROLL-IN SHOWER)

WHEEL CHAIR ACCESSIBLE ROOMS
ROOM 217 ACC. KING SUITE
ROOM 317 ACC. KING SUITE
ROOM 413 ACC. DOUBLE QUEEN
ROOM 417 ACC. KING SUITE

ROOMS EQUIPPED FOR HEARING IMPAIRED
ROOM 106 KING ROOM
ROOM 107 DOUBLE QUEEN ROOM
ROOM 206 DOUBLE QUEEN ROOM
ROOM 221 KING SUITE
ROOM 305 KING SUITE
ROOM 322 DOUBLE QUEEN ROOM
ROOM 410 KING ROOM
ROOM 425 KING SUITE

