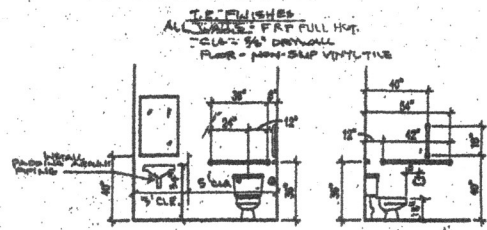


INTERIOR FINISHES
OFFICE WALLS- PAINTED DRYWALL
WAREHOUSE WALLS- 29 GA. STEEL PANELS
BATHROOM WALLS- FRP PANELS FULL HGT. WITHIN 36" OF ANY
PLUMBING FIXTURE, PAINTED DRYWALL WHERE
NO FRP PANELS INSTALLED
OFFICE CEILINGS- PAINTED DRYWALL
WAREHOUSE CEILINGS- 29 GA. STEEL PANELS
BATHROOM CEILINGS- PAINTED DRYWALL
OFFICE FLOORS- VINYL TILE
WAREHOUSE FLOORS- CONCRETE
BATHROOM FLOORS- NON-SLIP VINYL TILE
STAIRS- NON-SLIP VINYL TREADS

RESTROOM ACCESSORIES

- (A) 42" LG. X 1 1/4" DIA. S/S GRAB BAR W/ KNURLED FINISH. CENTER LINE OF GRAB BAR @ +33" A.F.F.
(B) 24" LG. X 1 1/4" DIA. S/S GRAB BAR W/ KNURLED FINISH. MOUNTED VERTICALLY W/ BOTTOM @ 39" A.F.F. 40" FROM BACK WALL
(C) 36" LG. X 1 1/4" DIA. S/S GRAB BAR W/ KNURLED FINISH. CENTER LINE OF GRAB BAR @ +33" A.F.F.
(D) TOILET TISSUE DISPENSER @ 24" A.F.F.
(E) WALL MTD. LIQUID SOAP DISPENSER
(F) WALL MTD. PAPER TOWEL DISPENSER
(G) 24" W. X 36" HGT. MIRROR @ 40" A.F.F.

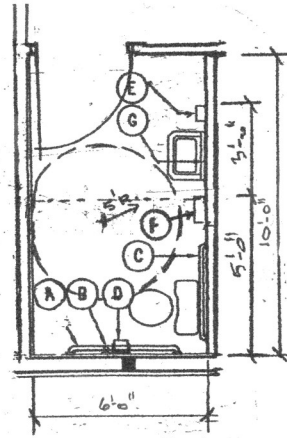


ADA GRAB BAR ELEVATIONS

SCALE: 1/4" = 1'-0"

ENLARGED TOILET PLAN

SCALE: 3/8" = 1'-0"

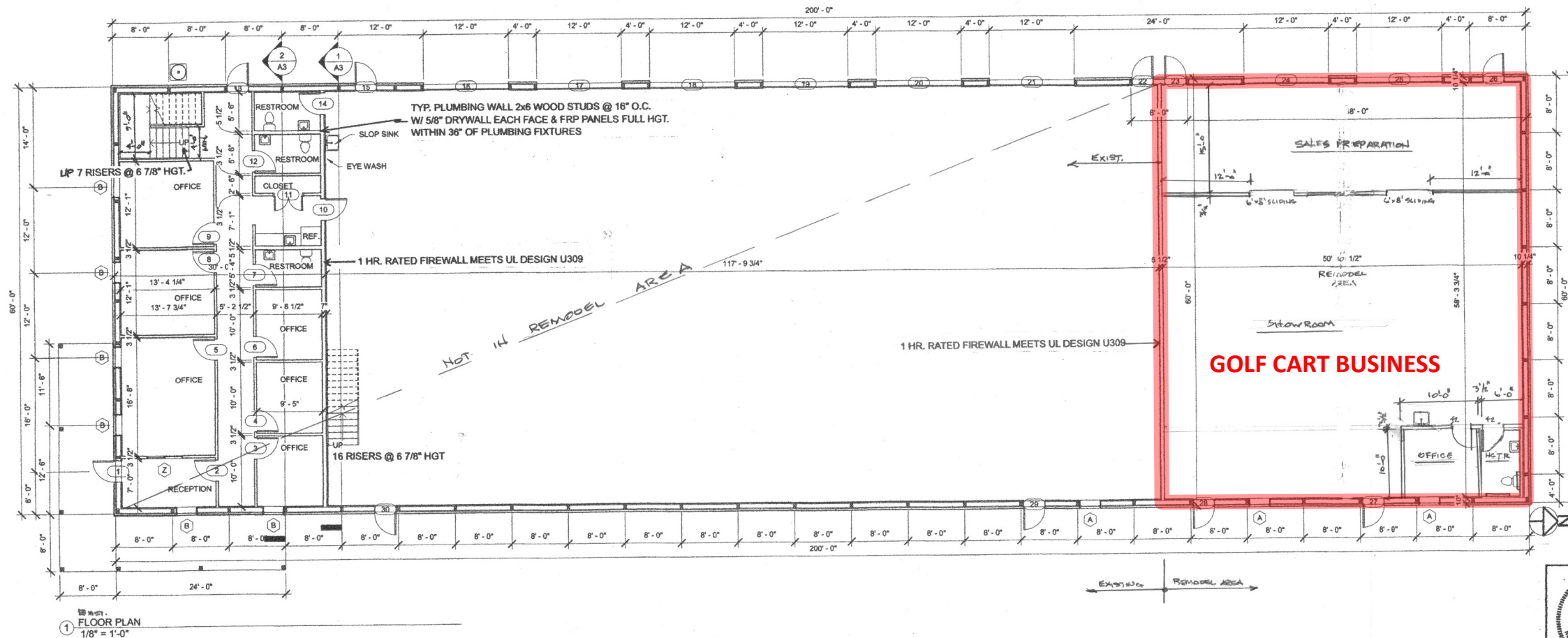


DOOR SCHEDULE						HARDWARE
DOOR NUMBER	SIZE			MATERIAL	ELEVATION	
	WIDTH	HT.	THK.			
1	3'-0"	6'-8"	2"			Interconnected Commercial Passage Door Lever
2	3'-0"	6'-8"	2"			Passage Lever Hardware
3	3'-0"	6'-8"	2"			Passage Lever Hardware
4	3'-0"	6'-8"	2"			Passage Lever Hardware
5	3'-0"	6'-8"	2"			Passage Lever Hardware
6	3'-0"	6'-8"	2"			Passage Lever Hardware
7	3'-0"	6'-8"	2"			Passage Lever Hardware
8	3'-0"	6'-8"	2"			Passage Lever Hardware
9	3'-0"	6'-8"	2"			Passage Lever Hardware
10	3'-0"	6'-8"	2"			Passage Lever Hardware
11	4'-0"	6'-8"	1 3/4"			Passage Lever Hardware
12	3'-0"	6'-8"	2"			Passage Lever Hardware
13	3'-0"	6'-8"	2"			Interconnected Commercial Passage Door Lever
14	3'-0"	6'-8"	2"			Passage Lever Hardware
15	3'-0"	6'-8"	2"			Interconnected Commercial Passage Door Lever
16	12'-0"	14'-0"	1 1/2"			
17	12'-0"	14'-0"	1 1/2"			
18	12'-0"	14'-0"	1 1/2"			
19	12'-0"	14'-0"	1 1/2"			
20	12'-0"	14'-0"	1 1/2"			
21	12'-0"	14'-0"	1 1/2"			
22	3'-0"	6'-8"	2"			Interconnected Commercial Passage Door Lever

DOOR SCHEDULE						HARDWARE
DOOR NUMBER	SIZE			MATERIAL	ELEVATION	
	WIDTH	HT.	THK.			
23	3'-0"	6'-8"	2"			Interconnected Commercial Passage Door Lever
24	12'-0"	14'-0"	1 1/2"			
25	12'-0"	14'-0"	1 1/2"			
26	3'-0"	6'-8"	2"			Interconnected Commercial Passage Door Lever
27	3'-0"	6'-8"	2"			Interconnected Commercial Passage Door Lever
28	3'-0"	6'-8"	2"			Interconnected Commercial Passage Door Lever
29	3'-0"	6'-8"	2"			Interconnected Commercial Passage Door Lever
30	3'-0"	6'-8"	2"			Interconnected Commercial Passage Door Lever
40	3'-0"	6'-8"	2"			Passage Lever Hardware
41	3'-0"	6'-8"	2"			Passage Lever Hardware
42	3'-0"	6'-8"	2"			Passage Lever Hardware
43	3'-0"	6'-8"	2"			Passage Lever Hardware
44	3'-0"	6'-8"	2"			Passage Lever Hardware
45	3'-0"	6'-8"	2"			Passage Lever Hardware
46	3'-0"	6'-8"	2"			Passage Lever Hardware
47	3'-0"	6'-8"	2"			Passage Lever Hardware
48	3'-0"	6'-8"	2"			Passage Lever Hardware
49	3'-0"	6'-8"	2"			Passage Lever Hardware
50	3'-0"	6'-8"	2"			Passage Lever Hardware
51	3'-0"	6'-8"	2"			Passage Lever Hardware
Grand total: 42						

WINDOW SCHEDULE				
Type Mark	Count	Family and Type	Width	Height
A	11	<varies>	3'-0"	4'-0"
B	6	Double Hung: 36" x 62"	3'-0"	5'-2"
C	7	Fixed: 72" x 24"	6'-0"	2'-0"
Z	1	Slider with Trim: 60" x 48"	5'-0"	4'-0"

GA File No.	ASSEMBLY DESCRIPTION	SKETCH AND DESIGN DATA	
		Fire	Sound
WP 3519	Gypsum Wallboard, Wood Studs One layer 1/2" type X gypsum wallboard or veneer base applied parallel with or at right angles to each side of 2 x 4 wood studs spaced 24" o.c. with 6d coated nails 1 7/8" long, 0.0915" shank, 1/4" heads, 7" o.c. Wallboard nailed to top and bottom plates at 7" o.c. Stagger joints 24" o.c. each side. (LOAD-BEARING)	Thickness: 47 1/2" Approx. Weight: 7 psf Fire Test: UL R3501-47, 48, 9-17-65; Design U309 R1319-129, 7-22-70 Design U314 Sound Test: NGC 2404, 10-14-70	



FLOOR PLAN
1/8" = 1'-0"

REMODEL SALES OFFICE/SHOWROOM

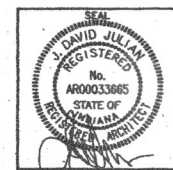
FOR

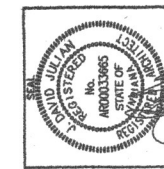
Warweg & Company Inc.
Franklin, IN

COPYRIGHT 2011 GRABER POST BUILDINGS. THE DRAWINGS, DESIGN INTENT AND CONCEPTUAL DATA CONTAINED IN THESE DOCUMENTS ARE THE PROPERTY OF THE DESIGNER AND ARE PROTECTED UNDER FEDERAL COPYRIGHT LAWS. ANY RE-USE OR REPRODUCTION OF THESE DOCUMENTS REQUIRES WRITTEN PERMISSION FROM THE DESIGNER.

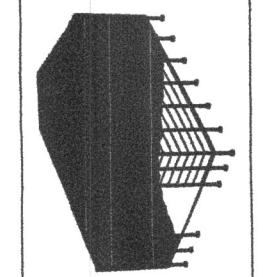
REV	DATE	DESCRIPTION
1		
2		
3		
4		
5		
6		
7		
8		
9		
10		
11		
12		
13		
14		
15		
16		
17		
18		
19		
20		
21		
22		
23		
24		
25		
26		
27		
28		
29		
30		
31		
32		
33		
34		
35		
36		
37		
38		
39		
40		
41		
42		
43		
44		
45		
46		
47		
48		
49		
50		
51		
52		
53		
54		
55		
56		
57		
58		
59		
60		
61		
62		
63		
64		
65		
66		
67		
68		
69		
70		
71		
72		
73		
74		
75		
76		
77		
78		
79		
80		
81		
82		
83		
84		
85		
86		
87		
88		
89		
90		
91		
92		
93		
94		
95		
96		
97		
98		
99		
100		

DATE: JULY 2013
DRAWN: DLS
CHECKED:
A1
FIRST FLOOR ARCH.
PLANS & SCHEDULES





GFB
7716 N 900 E
MONTGOMERY, IN
47956
(800) 264-5013



REMODEL SALES OFFICE/SHOWROOM
FOR
Warweg & Company Inc.
Franklin, IN

COPYRIGHT 2011 GRABER POST BUILDINGS. THE DRAWINGS, DESIGN INTENT AND CONCEPTUAL DATA CONTAINED IN THESE DOCUMENTS ARE THE PROPERTY OF THE DESIGNER AND ARE PROTECTED UNDER FEDERAL COPYRIGHT LAWS. ANY RE-USE OR REPRODUCTION OF THESE DOCUMENTS REQUIRES WRITTEN CONSENT FROM THE DESIGNER.

REV	DATE	DESCRIPTION
1		
2		
3		
4		
5		

DATE: JULY 2013
DRAWN: DLS
CHECKED:

A2
EXTERIOR ELEVATIONS

WINDOW SCHEDULE				
Type Mark	Count	Family and Type	Width	Height
A	11	<varies>	3' - 0"	4' - 0"
B	6	Double Hung: 36" x 62"	3' - 0"	5' - 2"
C	7	Fixed: 72" X 24"	6' - 0"	2' - 0"
Z	1	Slider with Trim: 60" x 48"	5' - 0"	4' - 0"

