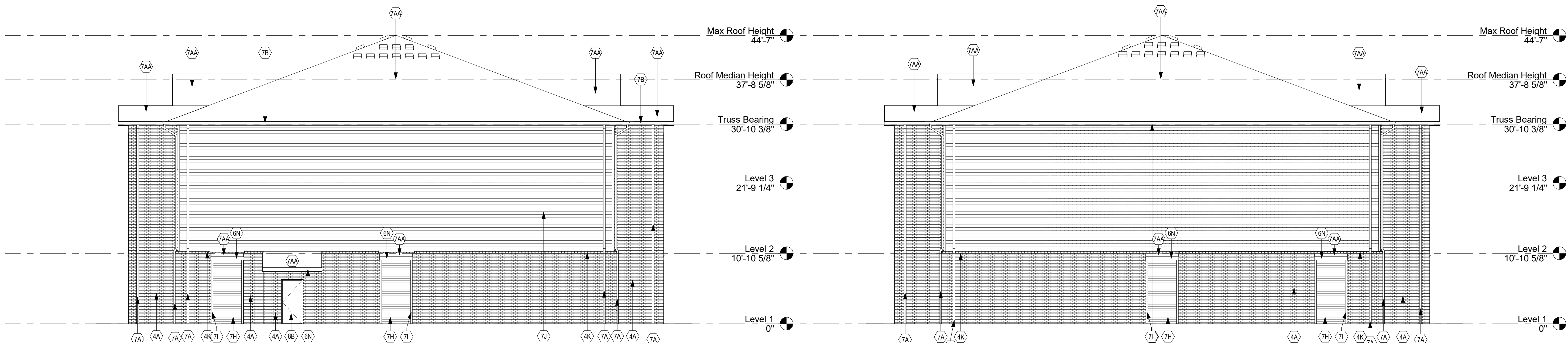


Revisions		
No.	Description	Date



3 Elevation - Type B - Left
A202 1/8" = 1'-0"

4 Elevation - Type B - Right
A202 1/8" = 1'-0"



2 Elevation - Type B - Rear
A202 1/8" = 1'-0"



1 Elevation - Type B - Front
A202 1/8" = 1'-0"

- Key Value**
- Keynote Text**
- 4A BRICK, SEE SHEET A100 FOR TYPE, INSTALL PER MFR'S RECOMMENDATION - COLOR TO BE SELECTED BY INTERIOR DESIGNER/ DESIGN ARCHITECT. PROVIDE CONT. FOUNDATION WEEP SCREED. REFER TO WALL SECTIONS.
 - 4C BRICK HEADER - TO MATCH WALL BRICK.
 - 4CC BRICK SOLDIER COURSE. SEE SHEET A100 FOR TYPE. - COLOR TO BE SELECTED BY INTERIOR DESIGNER/ DESIGN ARCHITECT.
 - 4K ROWLOCK COURSE FACE BRICK LEDGE. SLOPE AT 15 DEGREE ANGLE. PROVIDE SOLD BRICKS AT ENDS.
 - 5G DECORATIVE GUARDRAIL - SEE FABRICATION DETAILS
 - 6N 1X8 FIBER-CEMENT FASCIA BOARD OVER 2X WOOD BLOCKING.
 - 7A 5X4" PRE-FINISHED METAL DOWNSPOUT. COLOR TO BE SELECTED BY INTERIOR DESIGNER/ DESIGN ARCHITECT. ROUTE TO STORM PIPING UNLESS NOTED BY CIVIL ENGINEER AS DISCHARGING ONTO SPLASH BLOCKS. SEE CIVIL DRAWINGS. COORDINATE WITH DOWNSPOUT ADAPTER DETAIL - SEE ALSO SERIES DRAWINGS.
 - 7AA ASPHALT COMPOSITE. SEAL TAB-TYPE SHINGLES WITH 25-YEAR PRODUCT WARRANTY MIN OVER SYNTHETIC UNDERLAYMENT OVER EXTERIOR GRADE ROOF SHEATHING w/ CLIPS - REFER TO STRUCTURAL DRAWINGS
 - 7B 6" WIDE PRE-FINISHED K-STYLE METAL GUTTER. COLOR TO BE SELECTED BY INTERIOR DESIGNER/ DESIGN ARCHITECT.
 - 7DD RIDGE VENT
 - 7H 7-1/4" (6" EXPOSURE) CEDAR FINISHED FIBER-CEMENT LAP SIDING BOARDS - COLOR TO BE SELECTED BY INTERIOR DESIGNER/ DESIGN ARCHITECT.
 - 7J 9 1/4" (6" EXPOSURE) CEDAR FINISHED FIBER-CEMENT LAP SIDING BOARDS - COLOR TO BE SELECTED BY INTERIOR DESIGNER/ DESIGN ARCHITECT.
 - 7L 4" NOMINAL CEDAR FINISHED FIBER-CEMENT TRIM BOARDS - COLOR TO BE SELECTED BY INTERIOR DESIGNER/ DESIGN ARCHITECT.
 - 7MM SLANT BACK ROOF LOUVER (MINIMUM OF 50 SQ. IN. OF FREE VENTILATION AREA PER UNIT) - COLOR TO BE SELECTED BY INTERIOR DESIGNER/ DESIGN ARCHITECT. PROVIDE ONE (1) SQ. FT. OF FREE VENTILATION PER EVERY 150 SQ. FT. OF ATTIC FLOOR SPACE. G.C. TO INSTALL VENT BOX PER MFR'S RECOMMENDATIONS.
 - 8A SINGLE HUNG VINYL WINDOW UNIT WITH INSULATED GLAZING. REFER TO WINDOW SCHEDULE FOR ADDITIONAL INFORMATION. INSTALL PER MANUFACTURER'S INSTRUCTIONS.
 - 8B EXTERIOR INSULATED METAL DOOR AND FRAME ASSEMBLY. REFER TO DOOR SCHEDULE FOR ADDITIONAL INFORMATION.
 - 8C EXTERIOR PATIO DOOR. REFER TO DOOR SCHEDULE FOR ADDITIONAL INFORMATION.