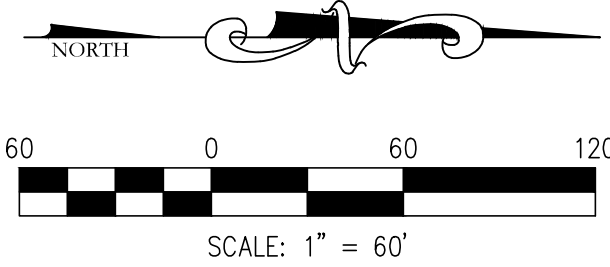


CONCEPT PLAN

FRANKLIN MULTI-FAMILY

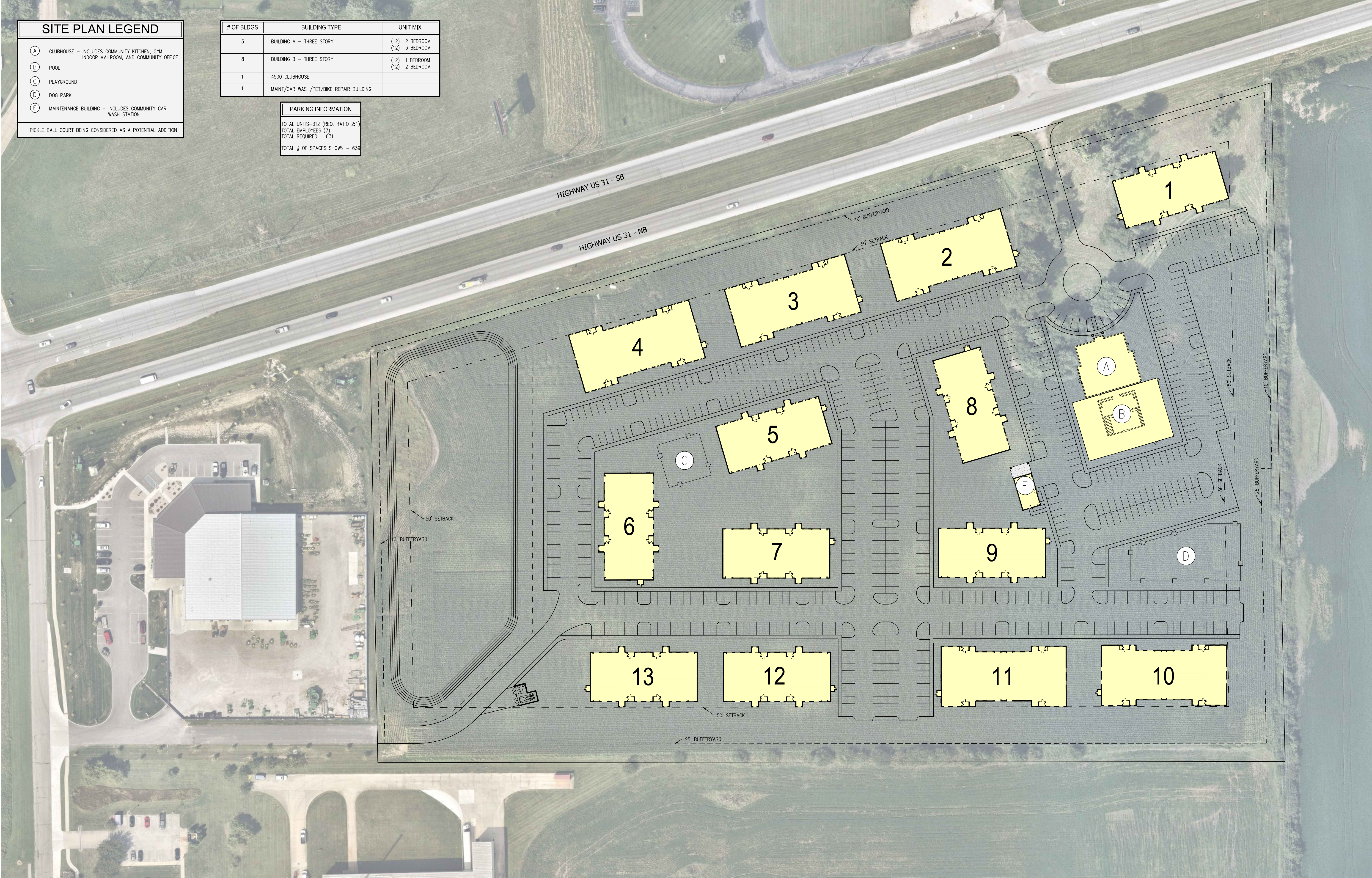
(RM ZONING SETBACKS)



| SITE PLAN LEGEND | |
|--|--|
| (A) | CLUBHOUSE - INCLUDES COMMUNITY KITCHEN, GYM, INDOOR MAILROOM, AND COMMUNITY OFFICE |
| (B) | POOL |
| (C) | PLAYGROUND |
| (D) | DOG PARK |
| (E) | MAINTENANCE BUILDING - INCLUDES COMMUNITY CAR WASH STATION |
| PICKLE BALL COURT BEING CONSIDERED AS A POTENTIAL ADDITION | |

| # OF BLDGS | BUILDING TYPE | UNIT MIX |
|------------|---|----------------------------------|
| 5 | BUILDING A - THREE STORY | (12) 2 BEDROOM (12) 3 BEDROOM |
| 8 | BUILDING B - THREE STORY | (12) 1 BEDROOM (12) 2 BEDROOM |
| 1 | 4500 CLUBHOUSE | |
| 1 | MAINT/CAR WASH/PET/BIKE REPAIR BUILDING | |

| PARKING INFORMATION |
|----------------------------------|
| TOTAL UNITS-312 (REQ. RATIO 2:1) |
| TOTAL EMPLOYEES (7) |
| TOTAL REQUIRED = 631 |
| TOTAL # OF SPACES SHOWN = 639 |



PREPARED BY:



CROSSROAD
ENGINEERS, PC

Transportation &
Development Consultants

115 N. 17th Avenue, Beech Grove, IN 46107 (317) 780-1555

APRIL 13, 2023