

THIS DRAWING AND ITS CONTENTS ARE THE COPYRIGHTED PROPERTY OF CH4 ARCHITECTS. USE THEREOF IS LIMITED TO THE SPECIFIC PROJECT AND SITE SET FORTH ABOVE, AND MAY NOT BE OTHERWISE USED OR REPRODUCED, IN WHOLE OR IN PART, WITHOUT THE WRITTEN PERMISSION OF CH4 ARCHITECTS. THE ARCHITECT, THIS DRAWING IS TO BE RETURNED UPON REQUEST.



14901 QUORUM DRIVE
SUITE 300
DALLAS, TX 75254

03/15/2022



PROJECT ADDRESS:
1731 N MORTON ST.
FRANKLIN, IN 46131
STORE #1692

REVISIONS:

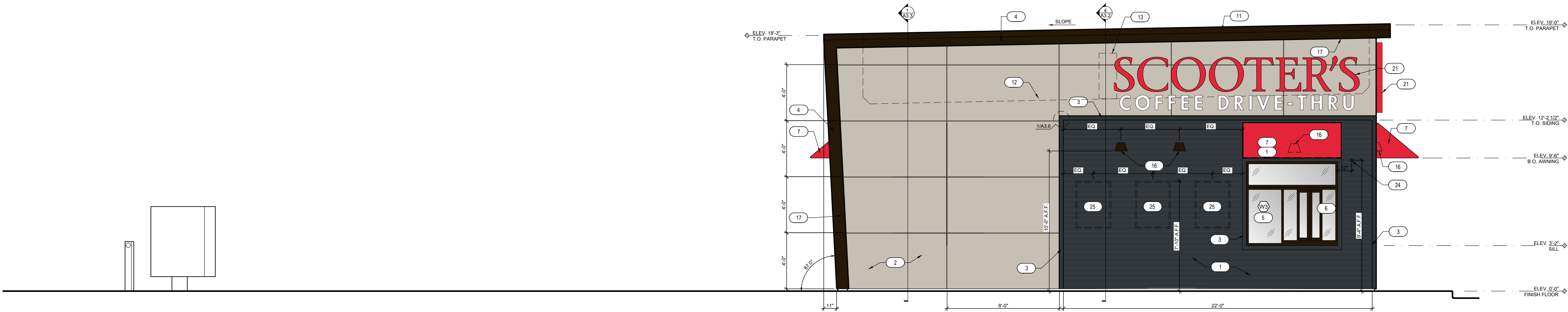
- 1
2
3

TITLE:
COLOR
EXTERIOR
ELEVATIONS

KIOSK PROTOTYPE:
4.1.4 PROTOTYPE
SEPTEMBER 2022
DATE:
11/28/2022
PROJECT NO.
221150

☒ PERMIT/BID SUBMITTAL
☐ CONSTRUCTION ISSUE

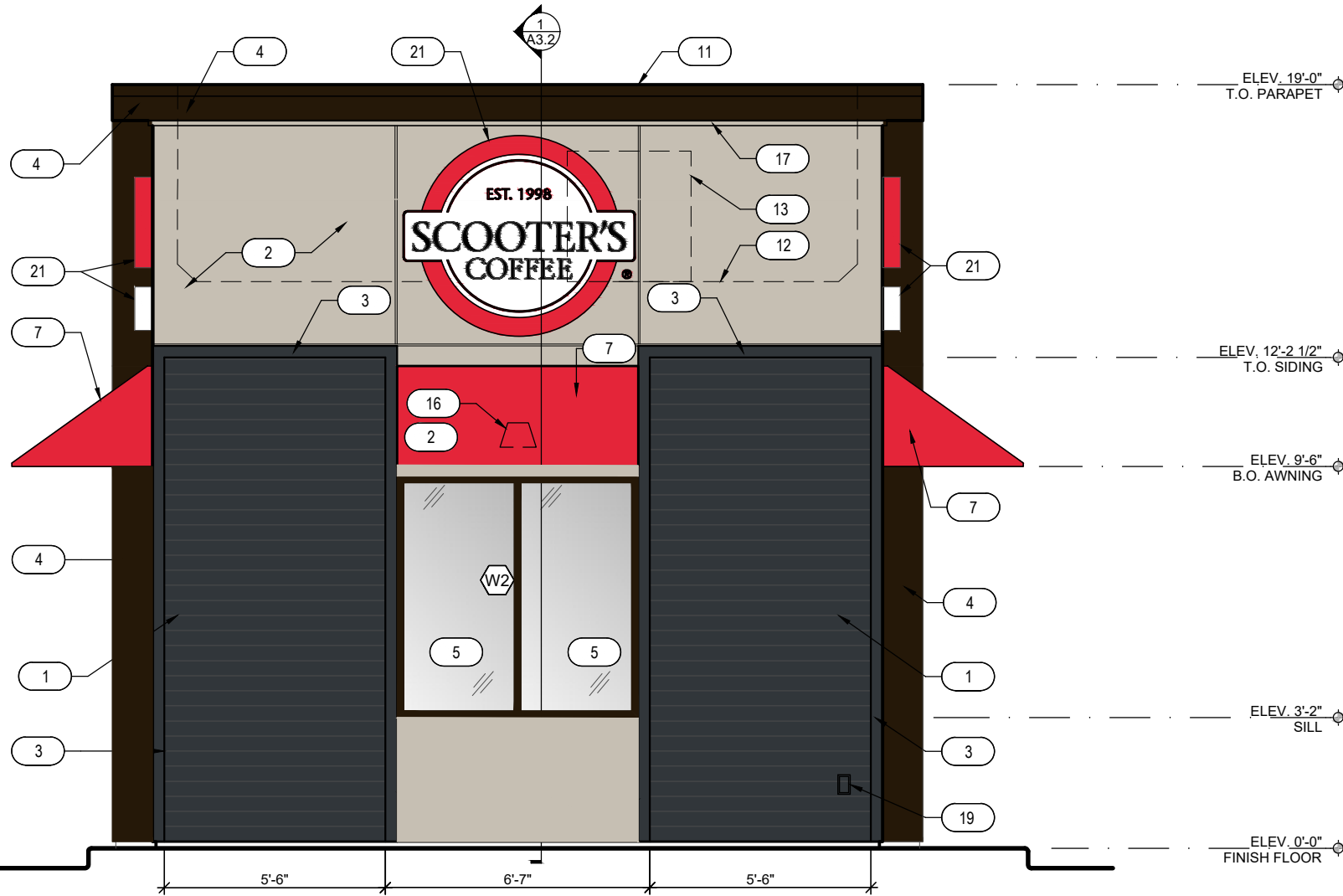
SHEET NO.
A2.0



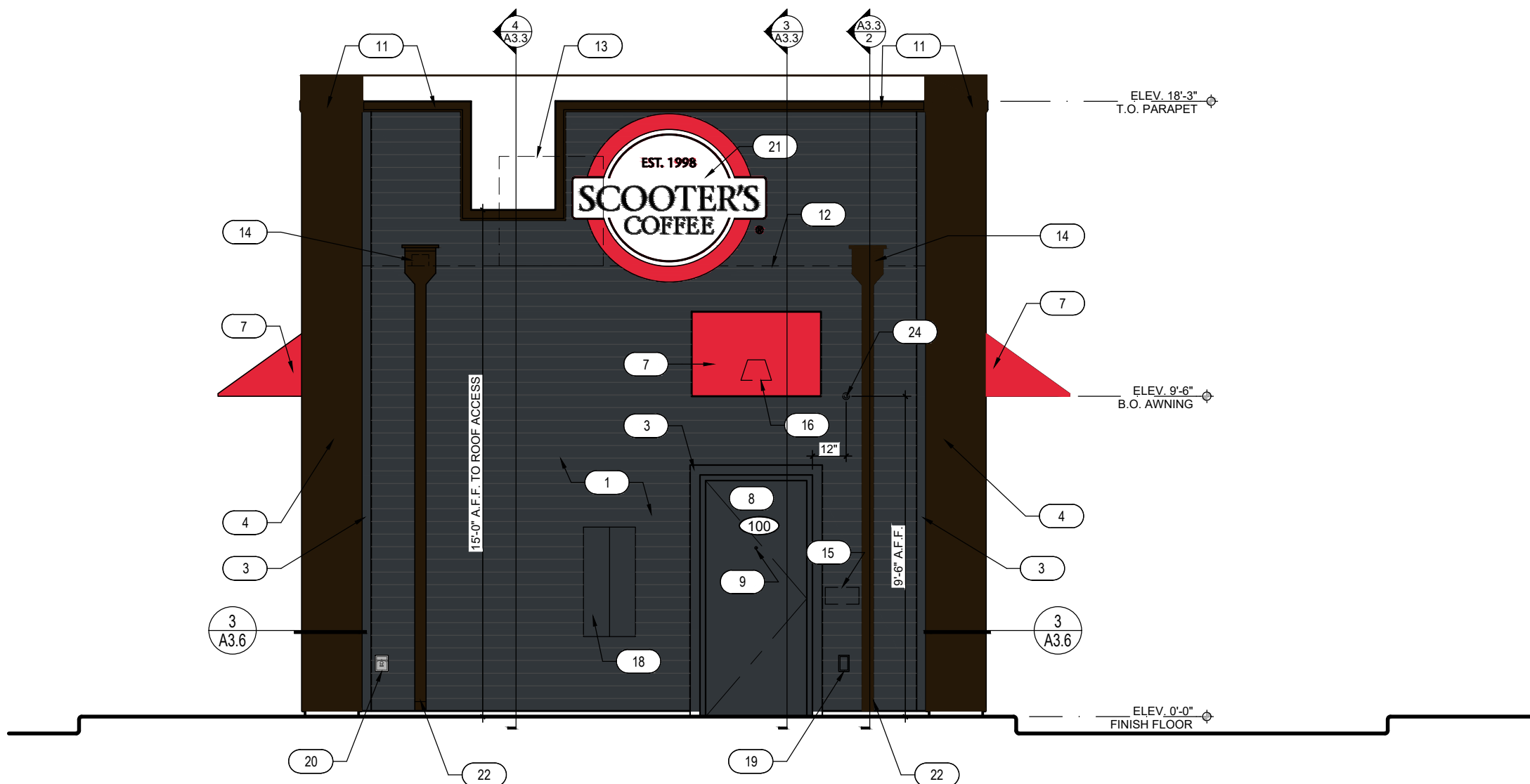
3 EXTERIOR ELEVATIONS
SCALE: 1/4" = 1'-0"

KEYNOTES

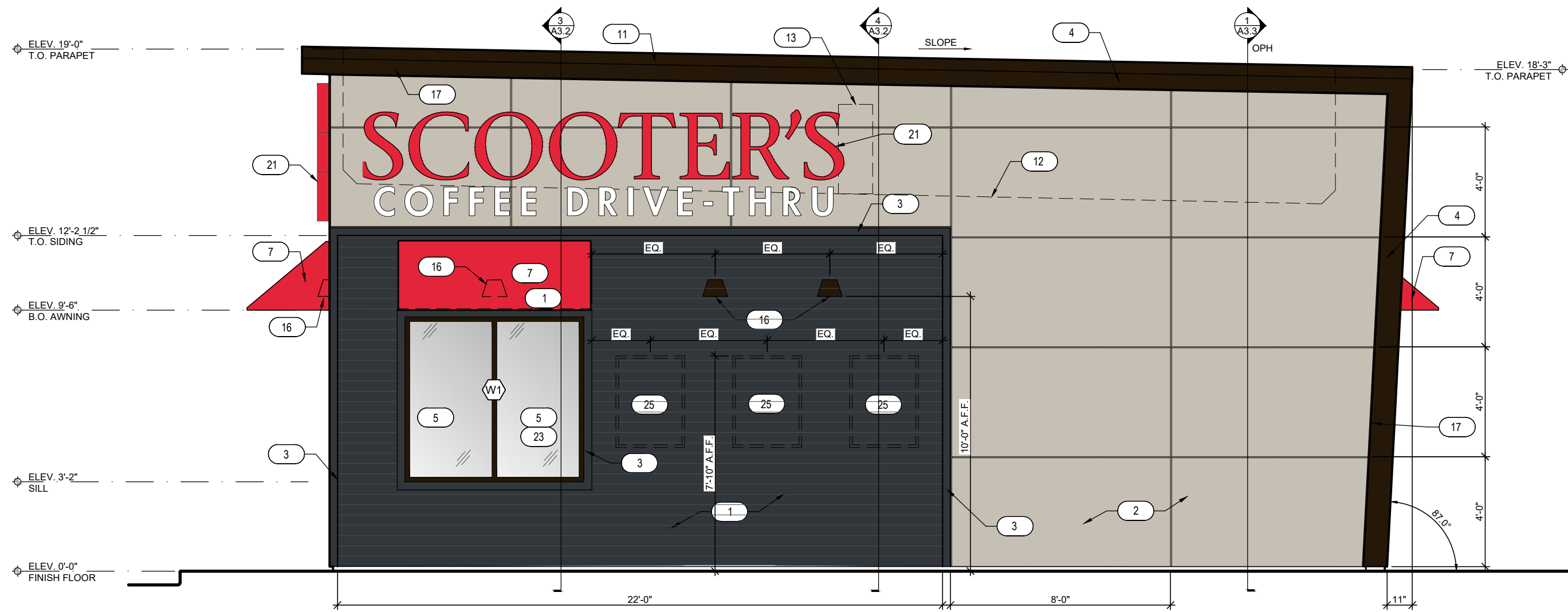
1. HARDIE PLANK H210 LAP SIDING CEDARMILL 6-1/4". SEE HARDIE DETAIL SHEET A3.6 - COLOR: SHERWIN WILLIAMS SW6992 INKWELL EGGSHELL FINISH
2. HARDIE REVEAL PANEL SYSTEM W210 - SMOOTH FINISH. SEE HARDIE DETAIL SHEET A3.6 - COLOR: SW 1015 SKYLINE STEEL
3. 3 1/2" HARDIE TRIM. SEE HARDIE DETAIL SHEET A3.6 - COLOR: SHERWIN WILLIAMS SW6992 INKWELL EGGSHELL FINISH
4. HARDIE BOARD TRIM ACCENTS AND SOFFITS - COLOR: BLACK
5. INSULATED DARK BRONZE ALUMINUM WINDOWS WITH DUAL PANE TEMPERED GLASS
6. QUICKSERVE 48x48 WINDOW - COLOR: DARK BRONZE
7. AWNING BY OTHERS - COLOR: RED
8. INSULATED HOLLOW METAL DOOR AND FRAME - COLOR: SHERWIN WILLIAMS SW6992 INKWELL EGGSHELL FINISH
9. WIDE ANGLE PEEP HOLE, BY DOOR MANUFACTURER
10. NOT USED
11. 22 GAUGE METAL PARAPET CAP
12. LINE OF ROOF BEYOND
13. AIR CONDENSER, SEE MECHANICAL DRAWINGS
14. ROOF SCUPPER AND DOWNSPOUT, SEE DETAIL 8/A3.4
15. MAILBOX BY GC BLACK
16. WALL MOUNTED LIGHT FIXTURE, SEE ELECTRICAL DRAWINGS
17. LED LIGHT BAND, SEE ELECTRICAL DRAWINGS
18. SES PANEL, SEE ELECTRICAL DRAWINGS
19. ELECTRICAL OUTLETS, SEE ELECTRICAL DRAWINGS
20. HOSE BIBB, SEE PLUMBING DRAWINGS
21. PROPOSED SIGNAGE BY OTHERS, UNDER SEPARATE PERMIT
22. CONNECT DOWNSPOUTS TO UNDERGROUND PIPING, REF. CIVIL
23. SPANDREL GLASS
24. NEW SECURITY CAMERA
25. CUSTOMER PROVIDED SIGN PANELS. PANELS TO BE MOUNTED TO FASCIA BY GC (WHEN PROVIDED) IN CUSTOMER SPECIFIED LOCATION USING PROPER HARDWARE AND FASTENERS (NON-CORROSIVE)



1 EXTERIOR ELEVATIONS
SCALE: 1/4" = 1'-0"



4 EXTERIOR ELEVATIONS
SCALE: 1/4" = 1'-0"



2 EXTERIOR ELEVATIONS
SCALE: 1/4" = 1'-0"