



10/12/20

modernwash COPYRIGHT 2018

5220 SCOTTSVILLE RD.
BOWLING GREEN, KY 42104
800.511.7208
info@modernwash.net

KOPETSKY AUTO WASH
US31 & BANTA
FRANKLIN, INDIANA

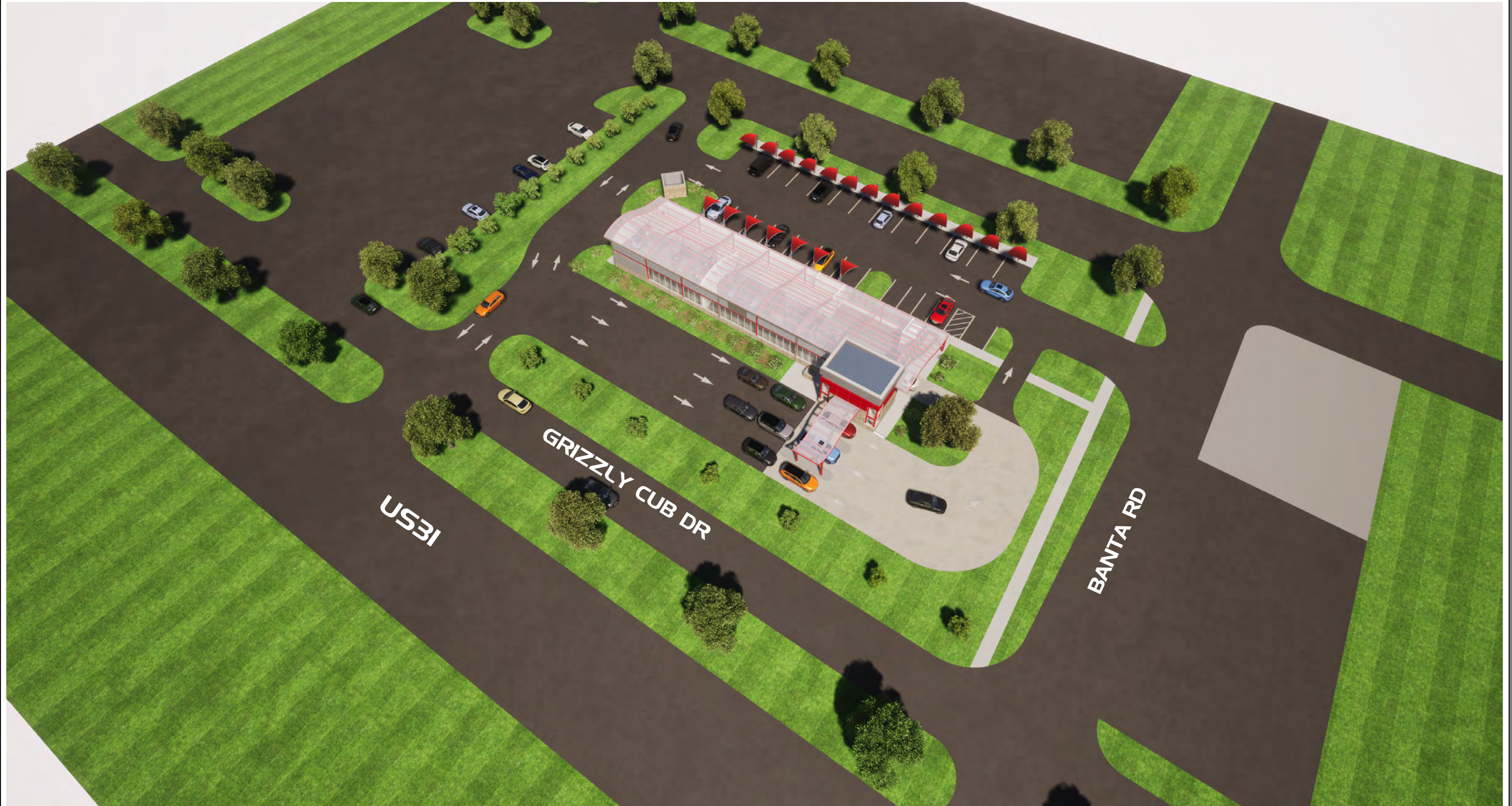




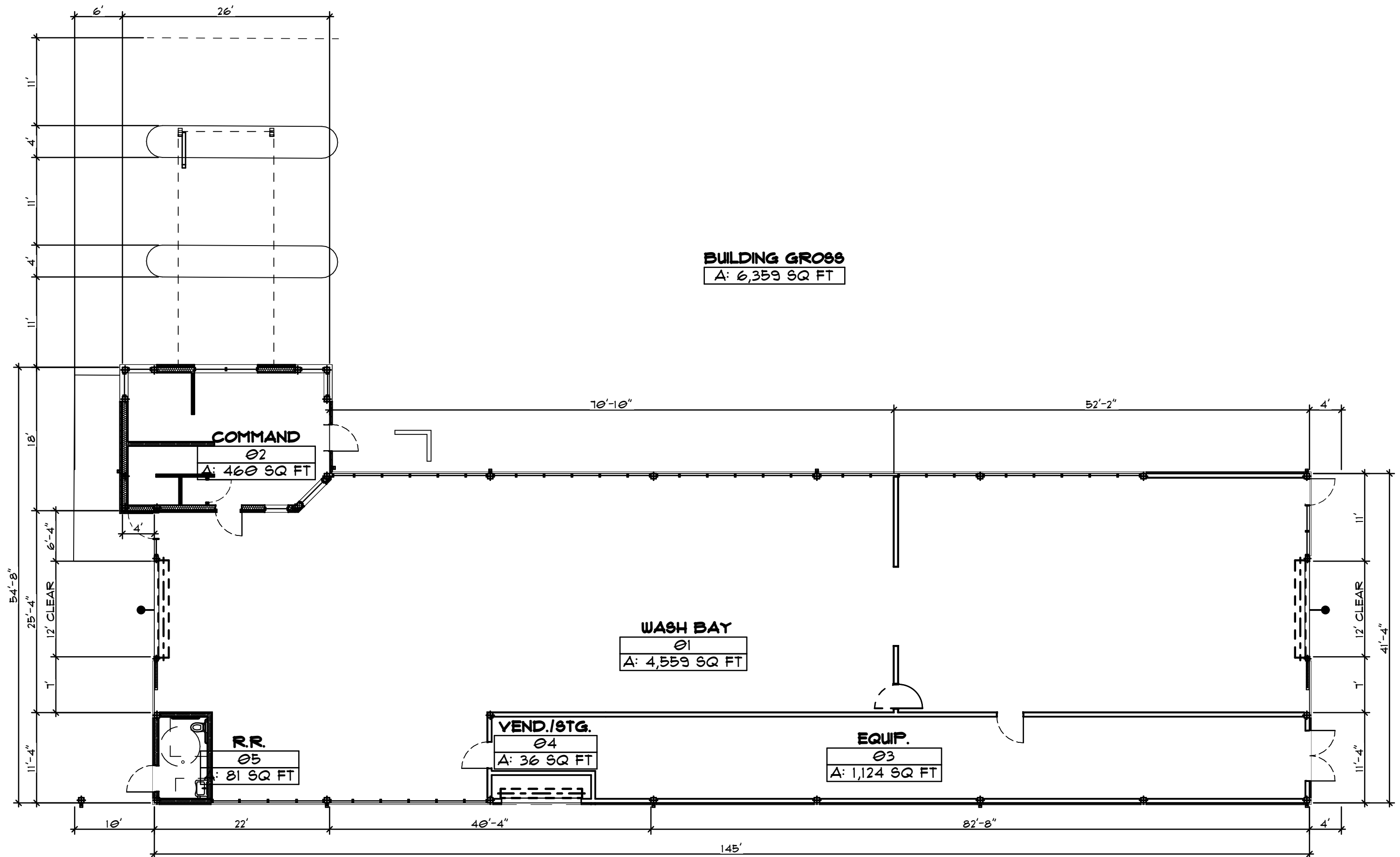












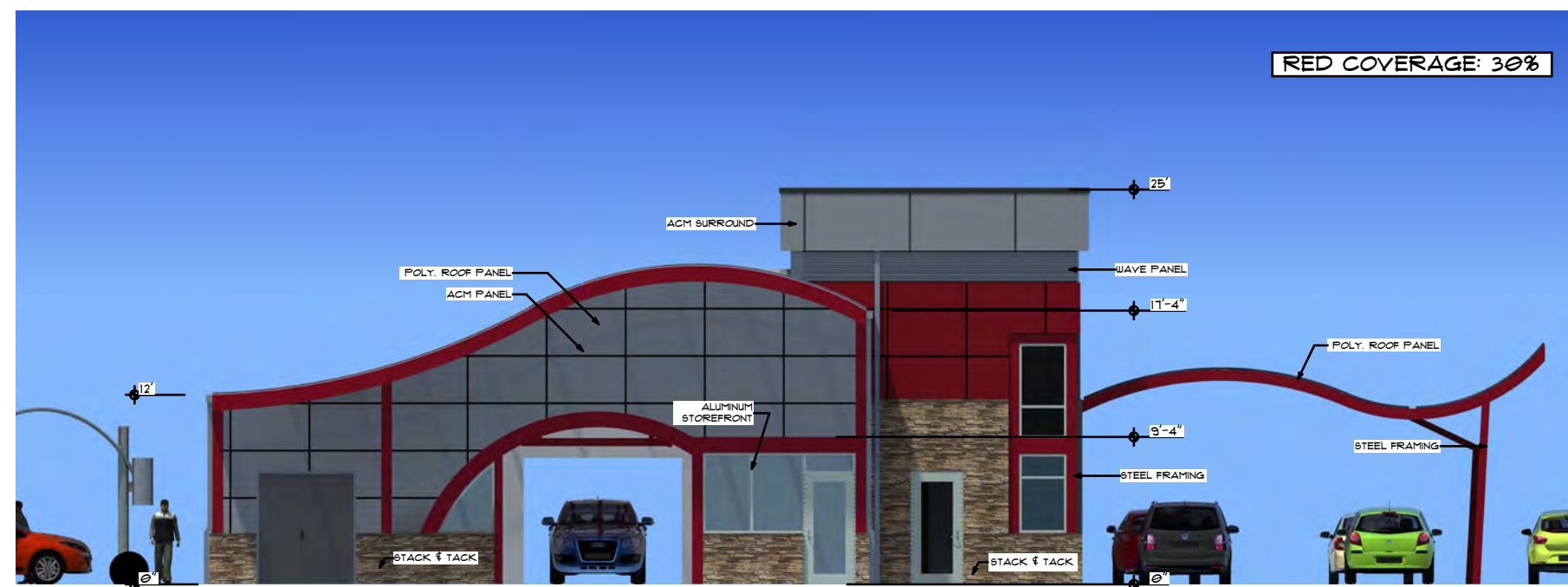
BUILDING GROSS
A: 6,359 SQ FT

WASH BAY
Ø1
A: 4,559 SQ FT

VEND./STG.
Ø4
A: 36 SQ FT

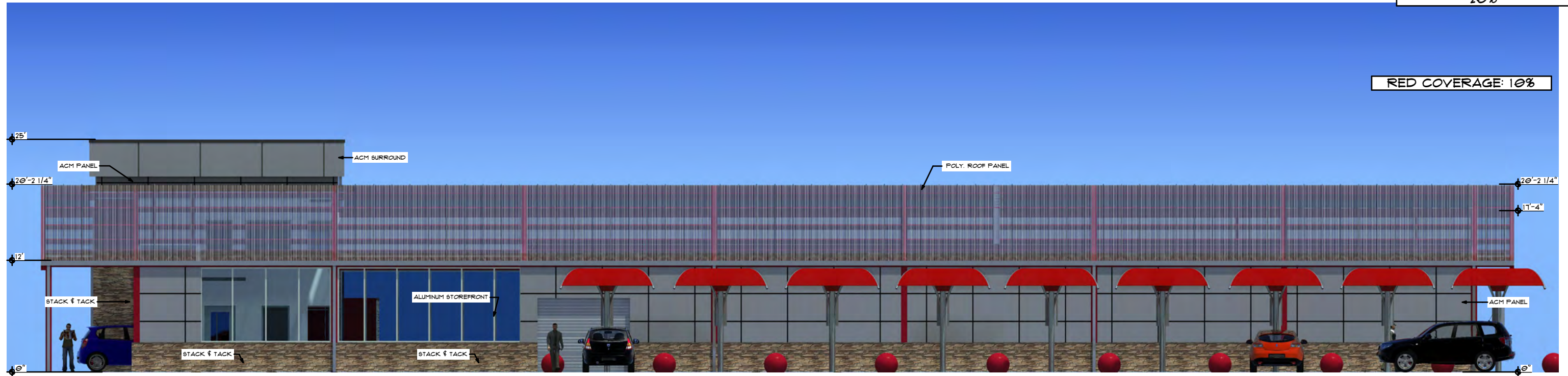
EQUIP.
Ø3
A: 1,124 SQ FT

R.R.
Ø5
A: 81 SQ FT



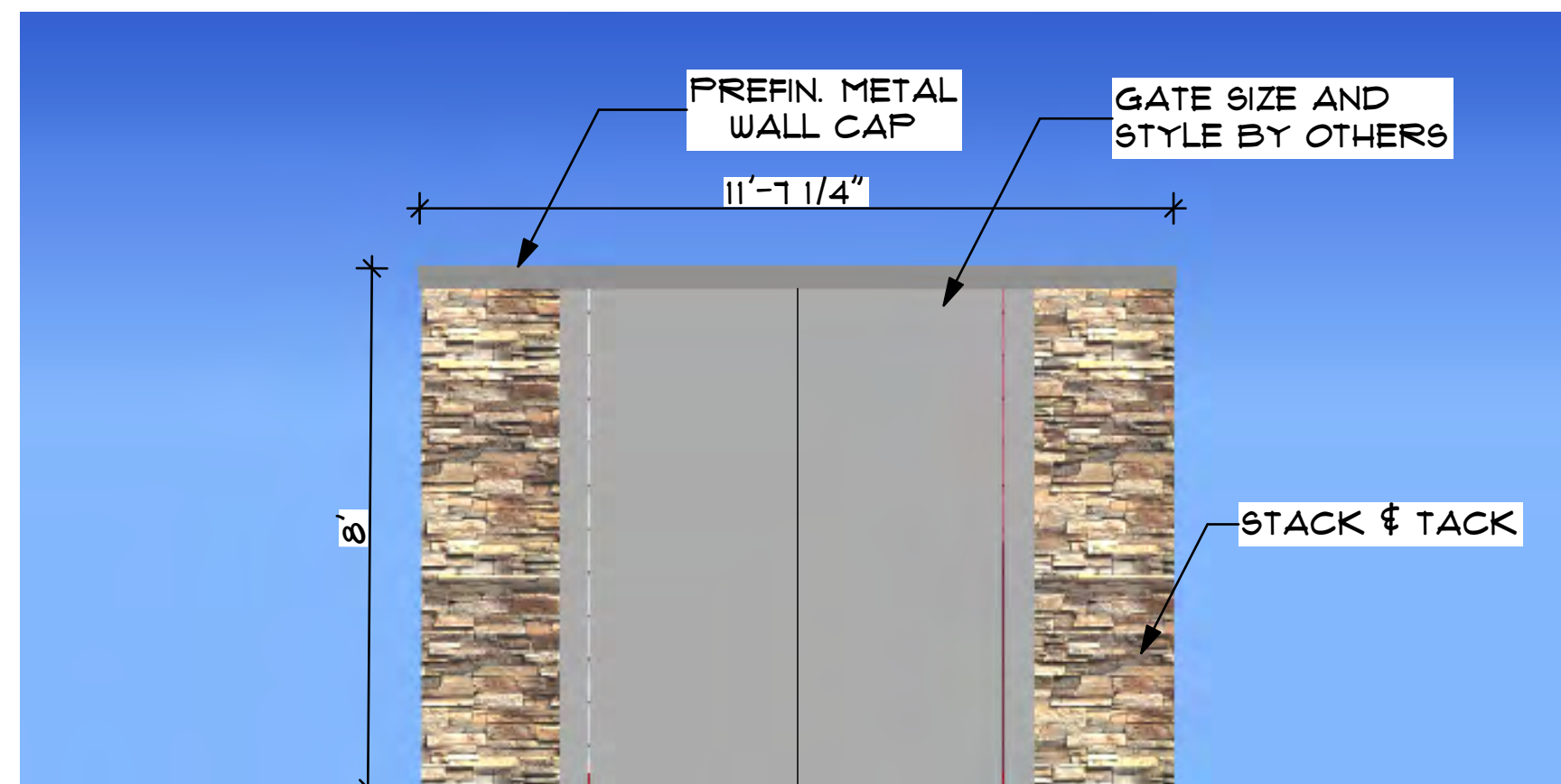
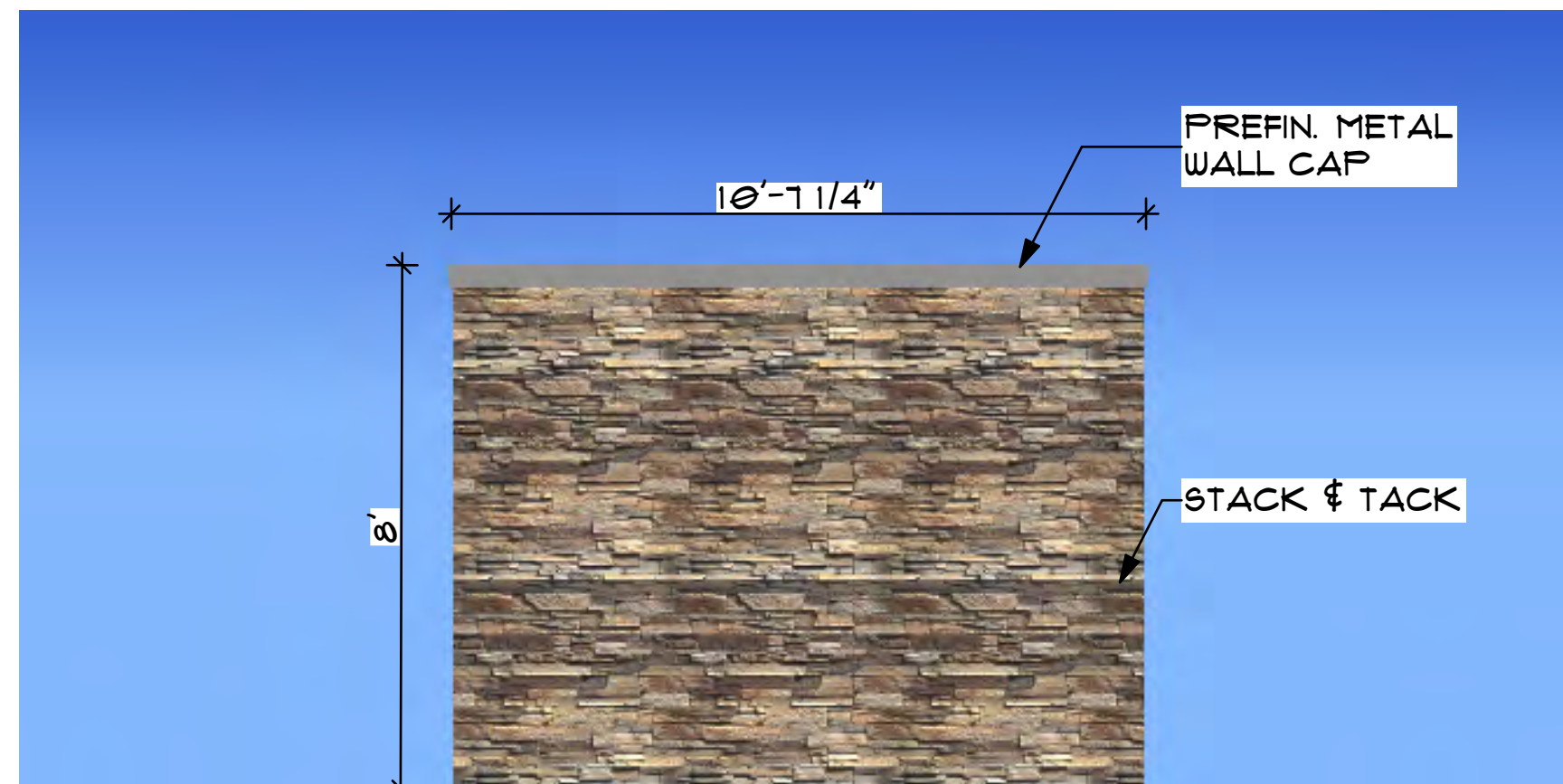
TOTAL RED COVERAGE:
20%

RED COVERAGE: 10%



RED COVERAGE: 30%





TYPICAL SPECIFICATIONS:

NOT ALL ITEMS LISTED BELOW APPLY TO EVERY PROJECT.

STEEL FRAME :

- 1. I-5 HIGH STRENGTH TUBULAR STEEL (HSS) STRUCTURAL FRAME MEMBERS. DESIGNED TO THE MOST RECENT IBC OR CURRENT LOCAL BUILDING CODES WITH STANDARD DESIGN LOADS OF GREATER THAN 30LBS. PER S.F. LIVE LOAD AND 100 MPH SUSTAINED WIND LOAD OR SITE SPECIFIC CONDITIONS AND APPLICABLE ZONE REGARDING SEISMIC LOADS. CONNECTING BOLTS SHALL BE A-325 SPECIFICATIONS, HIDDEN AT ALL CONNECTIONS. ALL FRAME MEMBERS SHALL BE STRUCTURAL STEEL TUBE SIZED ACCORDING TO STRUCTURAL ENGINEERING CALCULATIONS MINIMUM .120 WALL THICKNESS.
- 2. ALL FRAME MEMBERS DESIGNED ACCORDING TO THE AMERICAN INSTITUTE OF STEEL CONSTRUCTION (AISC) FOR COLD FORMED STRUCTURAL MEMBERS. ALL FABRICATION WELDS SHALL BE IN ACCORDANCE WITH THE GUIDELINES OF THE AMERICAN WELDING SOCIETY (AWS). FIELD WELDING IS NOT REQUIRED.
- 3. STRUCTURAL CALCULATIONS AND STAMPED ENGINEERING IS PROVIDED TO MEET FEDERAL, LOCAL CODES AND SITE CONDITIONS DETERMINED BY ZONES.

FRAME FINISH :

- 1. ALL TUBULAR STRUCTURAL STEEL MEMBERS SHALL BE PREPARED WITH OUR I-5 FINISH SYSTEM WHICH IS A TGIC POLY POWDER COATING WITH A ZINC ENRICHED APPLIED PRIMER IN MULTIPLE LAYERS.

ROOFING : (ADDITIONAL ROOFING OPTIONS ARE AVAILABLE)

- 1. PRE-FINISHED MEGA-RIB ROOF PANEL
- 2. TOPGAL 21MM POLYCARBONATE STANDING SEAM ROOF SYSTEM.
- 3. STRUCTURAL INSULATED PANEL (SIP) ROOF SYSTEM.

WALL, FLOOR, & CEILING FRAMING :

- 1. ALL WALL FRAMING IS (18 GAUGE) LIGHT GAUGE METAL (LGM) STUD INSTALLED UNLESS NOTED OTHERWISE. (STUD SIZE MAY VARY)
- 2. ALL CEILING FRAMING (NOT FOR INTENDED FOR STORAGE ABOVE) IS 8" (18 G, METAL JOISTS INSTALLED 12" ON CENTER UNLESS NOTED OTHERWISE.
- 3. ALL FLOOR FRAMING IS 12" (12 GAUGE) LIGHT GAUGE METAL JOISTS INSTALLED

GLAZING :

- 1. ALL STANDARD GLASS SYSTEMS SHALL BE STOREFRONT TYPE SYSTEMS WITH OR 1" INSULATED SAFETYGLASS. SECURED WITHIN 4 1/2" ANODIZED ALUMINUM FI URETHANE SEALS. (SUPPLIED BY OTHERS)
- 2. THERMOCLICK POLYCARBONATE WALL PANELS

KNEE WALL PANELS :

- 1. KNEE WALL GLAZING PANELS SHALL BE 3MM ALUMINUM COMPOSITE MATERIAL COORDINATING COLORS.

EXTERIOR FINISHES: (ADDITIONAL FINISH OPTIONS ARE AVAILABLE)

- 1. ALUMINUM COMPOSITE METAL (ACM) PANEL IN A 2 PART BASE AND CAP FINIS
- 2. FIBER CEMENT PANELS IN A 2 PART BASE AND CAP FINISH SYSTEM. MULTIPL AVAILABLE.
- 3. DECORATIVE METAL PANELS. MULTIPLE STYLES AVAILABLE.
- 4. STONE PANELS WITH INTEGRAL FLASHING

PVC TUNNEL DIVISOR WALLS :

- 1. SHALL CONSIST OF GALVANIZED STEEL 18 GAUGE STUDS FORMING A WALL FR, SHEETING APPLIED TO THE TUNNEL SIDE, COVERED WITH A WATER RESISTANT DUPONT TYVEK) WITH A 1/2" TONGUE AND GROOVE PVC PANELS APPLIED WIT

MAN DOORS :

- 1. EQUIPMENT ROOM: STEEL SLAB PAINTED MAN DOORS @ ENTRANCE / EXTERIC
- 2. PVC MAN DOOR FOR EQUIPMENT ROOM TO TUNNEL ACCESS.
- 3. ALUMINUM MAN DOORS WITH GLASS AT ALL EXTERIOR OFFICE AREA LOCATION OTHERS)

- AXIOM WAVE-

Car Wash
WAVE ROOF

- Features:
- Decorative Fascia System
 - Aluminum Composite Metal Panel Cladding
 - Decorative Steel Panels
 - Polycarbonate Roof Panels

